

UELZENER

Maschinen GmbH



ESTROMAT 260 - 600 - ISO

Mixing and conveying unit for
cementitious insulation masses



ESTROMAT 260-600-ISO



The compact mixing and conveying unit ESTROMAT 260-600 ISO is mounted onto a skid frame and is used for screed work, production of flat roof insulations, levelling compensation with the reconstruction of old buildings and many other applications, with which a homogeneous mixture from lightweight materials is processed such as polystyrene, light expanded clay aggregate and a suitable binding agent in earth moist to pasty consistency.



The semi-automatically operated butterfly valve serves as cover of the pressure vessel during the conveying process. It permits a fast filling with the components of the mixing material and allows with its pneumatic operation a fast closing and opening and thus a highest possible performance of the mixing and conveying unit.



ESTROMAT 260-600-ISO

Working method and description

The ESTROMAT 260-600-ISO is especially designed for the processing of light - special mortars, like polystyrene – cement – underlayments - roof insulation masses etc.

The machine essentially consists of the following components:

- Machine frame with skids
- Pressure vessel with semi-automatic butterfly valve locking
- Mixer with gear motor
- Air armature
- Pre-adjustable water metering armature
- Electric control
- Automatic central lubrication

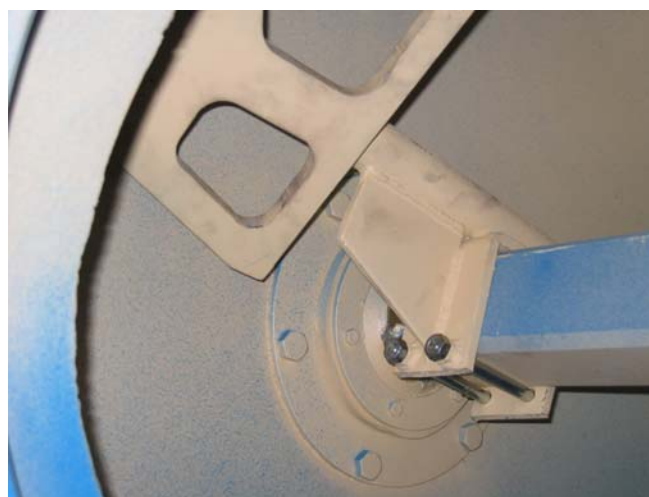
The vessel is mounted with built-in mixer onto the robust machine frame.

The metered quantity of water for a mixture flows through the water armature into the pressure vessel. From there the water is supplied to the aggregates and the binder and mixed intensively.

The mixer is equipped with special blades for intensive mixing of lightweight materials. With plastic strippers the vessel walls are kept clean and thus minimizing the cleaning work.

The vessel is hermetically locked by a cover by means of an excenter lever. Into the cover a semi-automatically working butterfly valve is integrated. After the relief valve was closed, the main air valve is opened. In central position of the two valves for upper air and accelerator the stopper conveying starts and blows the vessel content in 1 – 3 minutes through the conveying hose to the processing place.

The mixing and conveying unit ESTROMAT 260-600-ISO mixes in batch quantities a homogeneous mass of suitable binding agent lightweight materials and water of a nearly dry to pasty consistency. The pressure vessel conveys the mixing material pneumatically by the stopper conveying procedure carefully through flexible conveying hoses to the processing place.



ESTROMAT 260-600-ISO

The electric control is placed directly at the operating side of the machine. The operating and indication units and the digital water dosage equipment are clearly arranged and marked.



Technical Data

260.00.606 5,5 kW

260.00.606.1 9,2 kW

Mixing vessel volume:	600 l	600 l
Useful vessel volume:	appr. 600 l at spec. weight < 1,0kg/dm ³	appr. 600 l at spec. w.< 1,0kg/dm ³
Mixing motor output:	5,5 kW	9,2 kW
Voltage:	400V / 50Hz three phase	400V / 50Hz three phase
Electric connection:	CEE516/6h (3/N/PE)	CEE532/6h (3/N/PE)
Electric protection:	Standard IP 55	Standard IP 55
Required compressed air:	max. 6 bar, min. 5m ³ /min	max. 6 bar, min. 5m ³ /min
Maximum vessel pressure:	8 bar	8 bar
Conveying output*):	up to max. 10m ³ /h	up to max. 10m ³ /h

*) depending on material, conveying distance, compressed air and conveying hose.

Size and weight

Total length:	2400 mm
Total width:	1100 mm
Charging height mixing vessel:	1170 mm
Total height = transport height:	1850 mm
Weight empty:	appr.1200kg

Scope of delivery

Conveying unit with skid frame
 Discharge stand ID65 KK70
 Automatic central lubrication
 Tools
 Operating manual / Spare parts list
 TÜV pressure vessel approval
 CE – conformity declaration

Tel: +49(0)6142 - 17768-0
 Fax: +49(0)6142 - 17768-50
 e - mail: contact@uelzener-ums.de
 website: www.uelzener-ums.de

Technical changes reserved.
 Doc. file: Pro E260-600-ISO-eng ppt,
 cmm-design



UELZENER
MASCHINEN GMBH
 Stahlstrasse 26-28
 D-65428 Rüsselsheim
 Germany

Dealer